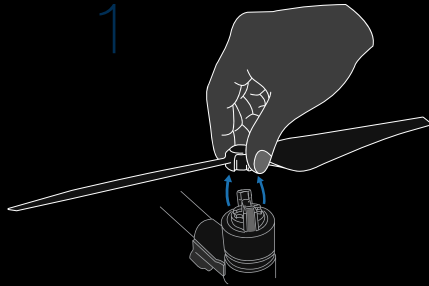
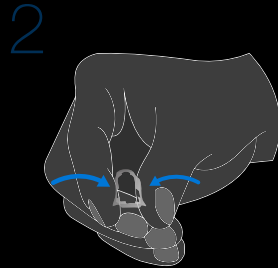


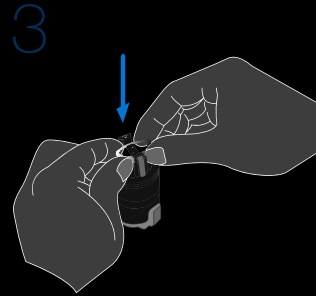
PROPELLERS QUICKSTART GUIDE



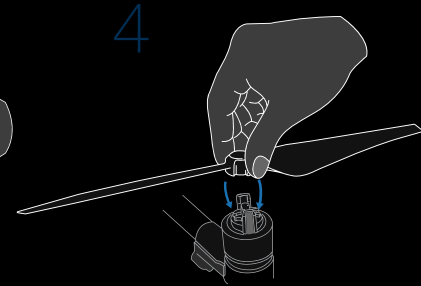
1 Remove all 4 propellers from the rotors



2 Gently bend all 4 adaptors to fit them in place



3 Place all 4 adaptors on the rotors



4 Snap all 4 propellers back in place

How to use .005" and .006" adaptors

To prevent propellers from wobbling, try with .005" adaptors first. If the propellers are still loose, use .006" adaptors, or use them both.

HOW TO MOUNT



SCAN & WATCH



ULTIMADROME

